

# PATHFINDER EXPLORATION TECHNIQUES TARGETING PORPHYRY AND EPITHERMAL ALTERATION SYSTEMS IN THE TEMORA COPPER-GOLD BELT

**Bruce Hooper \***  
Sandfire Resources  
31 Ventnor Ave, West Perth  
Bruce.hooper@sandfire.com.au

**Damien Stephen**  
Sandfire Resources  
31 Ventnor Ave, West Perth  
Damien.stephens@sandfire.com.au

**Mathew Peacock**  
Sandfire Resources  
31 Ventnor Ave, West Perth  
Matthew.peacock@sandfire.com.au

*\*presenting author asterisked*

## SUMMARY

The Temora project is a key exploration target for Sandfire to discover an economic copper-gold deposit in the Lachlan Fold Belt, NSW. The district contains an Ordovician Volcanic centre that has been explored over many years and hosts a number of defined porphyry and epithermal deposits. The availability of historical drill holes meant pulps could be re-analysed for multi element geochemical data and Short Wave Infrared analysis (SWIR) data to be collected across the district.

Spectral data from the white micas defined the areas of higher temperature alteration associated with mineralisation across the district. Analysis, logging and re-interpretation of the data led to the definition of a number of new targets where the systems were poorly or untested. A high priority target was defined at the Donnington prospect to the north of a small known porphyry resource on the margins of the Rain Hill intrusive complex. The target showed a potential porphyry zonation systems in the interpreted geology, alteration, SWIR analysis, geochemistry and geophysics.

Drilling in the first field season intersected 120m @ 0.3 % Cu and 0.5 g/t Au from 250m with follow up drilling intersecting 77m @ 0.3 % Cu and 0.5 g/t Au from 250m around a small porphyry intrusive. Mineralisation is hosted in quartz-magnetite-feldspar-pyrite-chalcopyrite veins associated with a chlorite-magnetite-carbonate alteration. A later quartz-sericite-pyrite alteration postdates the mineralisation causing a demagnetised zone surrounding a weak magnetic high that has been used in defining the mineralisation. The mineralisation is still open and further drilling is required.

**Key words:** Temora, Porphyry, SWIR, Donnington, Sandfire

## INTRODUCTION

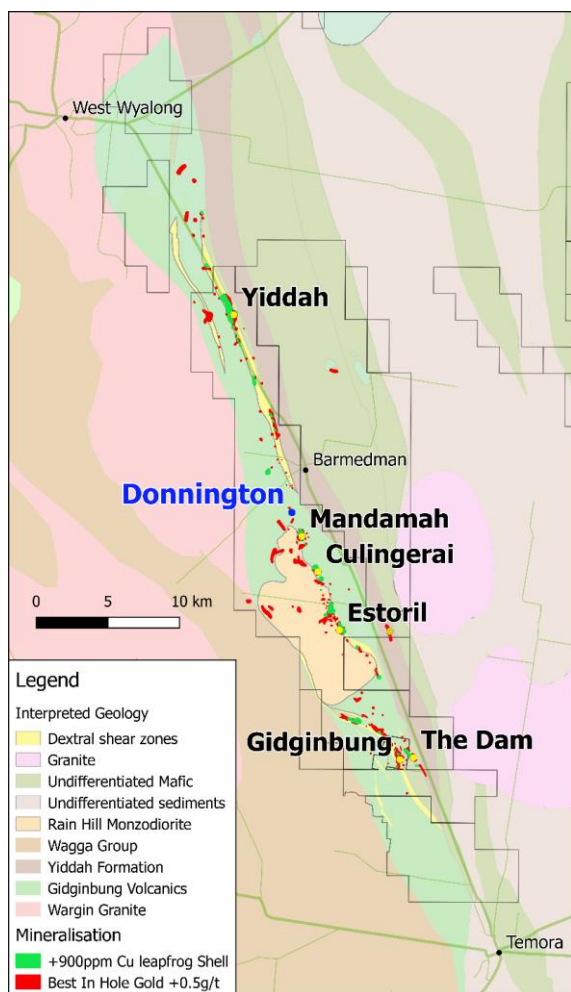
Sandfire Resources NL (Sandfire) considers the Lachlan Fold Belt to be a key target area for discovery of a significant economic deposit masked by recent sediments. Sandfire has built up a significant 100% owned tenement holding to target porphyry Copper-Gold and Epithermal Gold within the Ordovician volcanic complexes under less than 100m of cover (Figure 1).



**Figure 1: Lachlan Fold Belt Sandfire Tenements.**

The Temora project lies in the Lachlan Fold Belt south of West Wyalong and was targeted by Sandfire as a mineralized district with potential for new and higher grade deposits that could be unlocked with modern exploration techniques. The tenements were purchased outright in 2015.

A number of mineralised systems are defined within the Late Ordovician Gidginbung Volcanic Complex (Figure 2), including the historical Gidginbung high sulphidation gold mine and a number of mineralised porphyry prospects including Yiddah, Mandamah, Cullingerai, Estoril and the Dam deposits. Mineralisation is related to narrow intrusive dykes within a coeval volcanic pile of volcanoclastics, sediments and lavas. Quartz-magnetite-feldspar-pyrite-chalcopryrite veins are associated with a chlorite-magnetite-carbonate alteration. A later quartz-sericite-pyrite alteration postdates the mineralisation (Mowat et al, 2012).

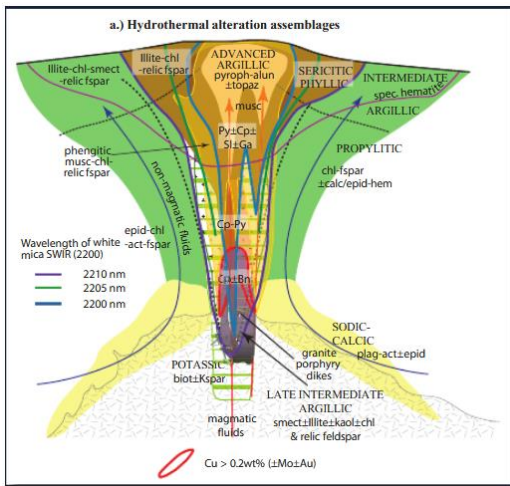


**Figure 2: Temora interpreted geology, geochemical anomalies defined from aircore drilling.**

## EXPLORATION ANALYSIS

The substantial previous exploration work including over 4,000 drill holes was compiled, holes were re-logged and geophysics re-interpreted. Time was allowed to collect all previous holes and available pulps in the West Wyalong yard for re-logging and resampling to incorporate new data in detailed re-analysis of the geology and alteration systems. The availability of these historical drill pulps, chip samples and core enabled the first comprehensive multi-element geochemistry and Short Wave Infrared (SWIR) analysis of many of these samples. This provided a good understanding of the project prior to commencing drilling campaigns.

Interpretation of the SWIR hydrous minerals' (e.g. micas, clays, hydrous sulphates) spectra identified their individual crystallinity, (the higher the temperature of formation the higher the level of crystalline order). The illite crystallinity is measured by calculating the depth of 2200nm absorption peak divided by the H<sub>2</sub>O absorption peak at ~1900nm. The less water in the matrix the higher the crystallinity. The 2200nm Al-OH absorption peak in white micas is a proxy for Ph gradients in the paleo fluid with acid paleo fluids giving lower wavelengths (Figure 3) (Chang et al, 2014).



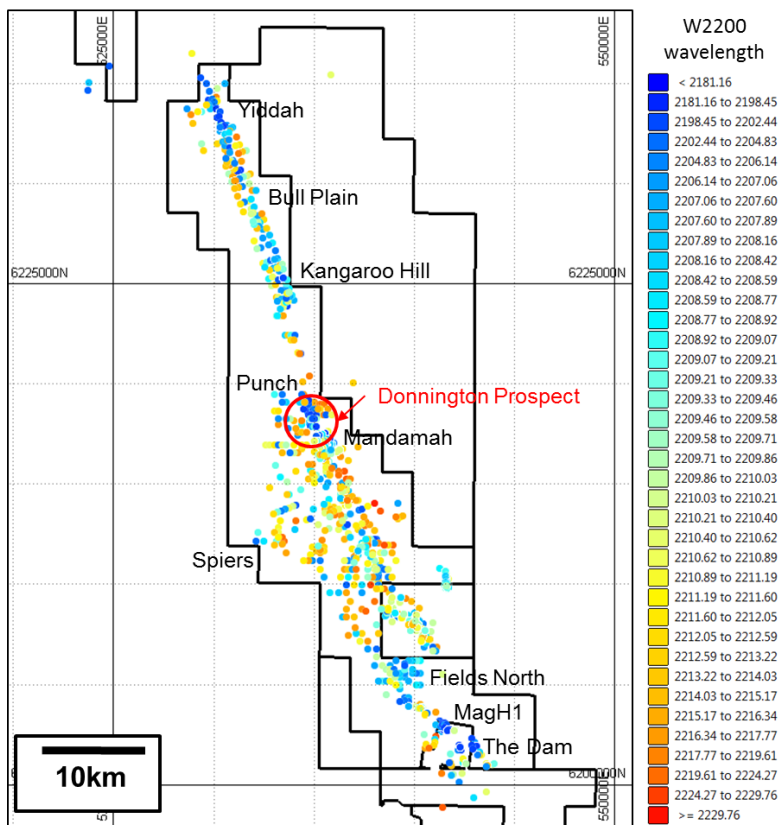
**Figure 3: Vertical cross section of a typical porphyry Cu deposit showing distribution of hydrothermal alteration and sulfide minerals. Also shown are generalized contours of the 2,200-nm peak measured in SWIR instruments- from Halley et.al. 2015.**

In combination with trace element compositions, petrology, whole rock geochemistry the crystalline structure variations provide an alteration zonation and vectors towards higher temperature (acid) fluids based on stability diagrams and distributions around known deposits (Halley et al, 2015).

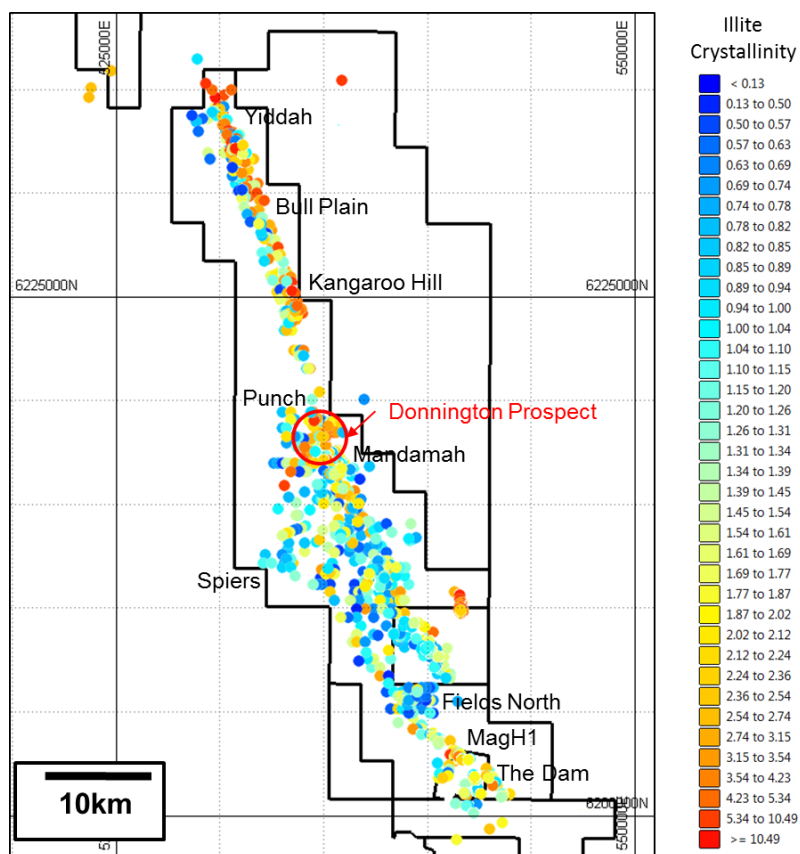
### INTERPRETATION AND TARGET DEFINITION

The hydrothermal alteration assemblages, multi-geochemical zonation patterns from aircore drilling combined with the known geophysical signatures associated with porphyry deposits (Hoschke, 2011) enabled the prioritisation of modern IP and gravity surveys with infill aircore and diamond drilling.

This work confirmed high temperature, low Ph alteration at Yiddah and Yiddah North (untested), The Dam, MagH1, Fields North, Punch and Mandamah. One of the most intense zones of this alteration was highlighted between Punch and Mandamah defined as the Donnington prospect (Figures 4 and 5).



**Figure 4: Plan showing spatial distribution of the 2200nm wavelength absorption peak associated with white micas over Temora tenements.**



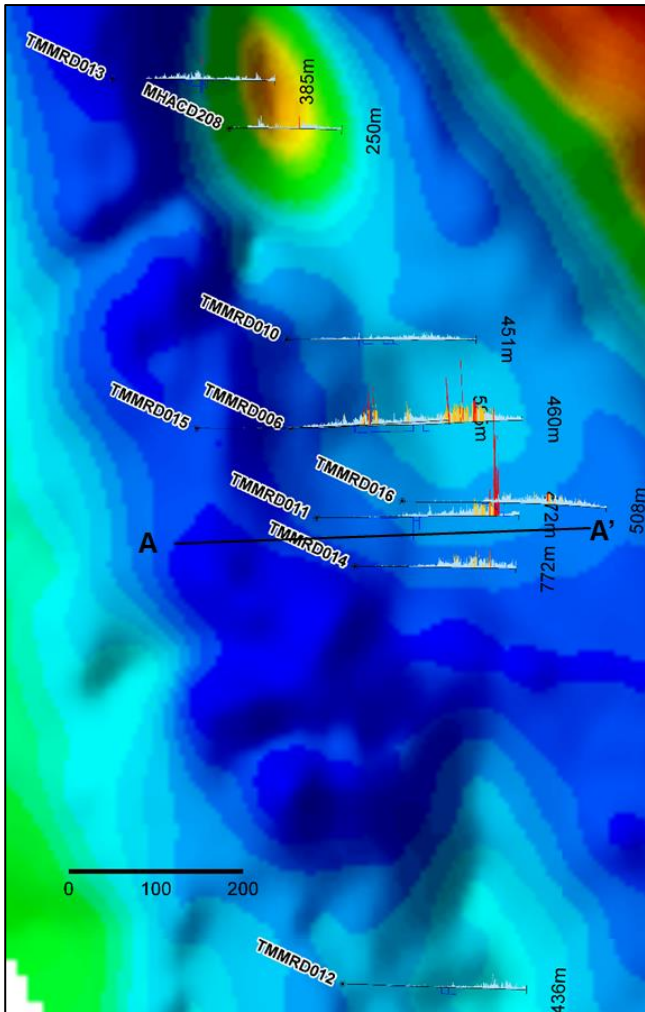
**Figure 5: Plan showing Illite Crystallinity over Temora tenements.**

Priority targets were highlighted across the belt, including targets at depth associated with the Gidginbung high sulphidation epithermal gold system and the northern and eastern margins of the Rain Hill monzodiorite intrusive centre (Internal reports, Kitto 2016).

### EXPLORATION PROGRAM

Drilling during the 2016-2017 field season included deep diamond holes targeted at MagH1, Gidginbung and on the margins of the Rain Hill monzodiorite.

The Donnington prospect was defined within a 12 km long magnetic depletion zone, the Mandamah Alteration Zone (MAZ), on the eastern margin of the Rain Hill monzodiorite. The entire extent of the depletion zone shows a consistent, best in hole, aircore copper result of +500ppm with a peak to the north at Punch of 1,630ppm Cu with a peripheral zinc anomaly. Infill aircore drilling further defined the anomaly. The geological, geochemical and SWIR anomaly defined at Donnington is associated with a 2nd order weak magnetic signature within this large alteration zone (Figure 6).



**Figure 6: Donnington magnetic image showing copper mineralization intersected in drilling associated with a 2nd order magnetic high.**

A Diamond hole was drilled to test the anomaly and was successful in discovering porphyry style mineralisation in the first hole, with an intercept of 125m @ 0.32% Cu and 0.46g/t Au. Mineralisation is associated with narrow porphyry dykes with potassic alteration and quartz-magnetite-chalcopyrite and pyrite mineralization (Figure 7).



**Figure 7: Donnington mineralization in core from TMMRD011.**

Follow up drilling has intersected 77m @ 0.44% Cu and 0.65g/t Au including 24m @ 0.89% Cu and 1.39 g/t Au. Drilling has encountered mineralization over 200m along strike, 700m depth and is still open (Table 1, Figure 8). (Sandfire Quarterly Report June 2017).



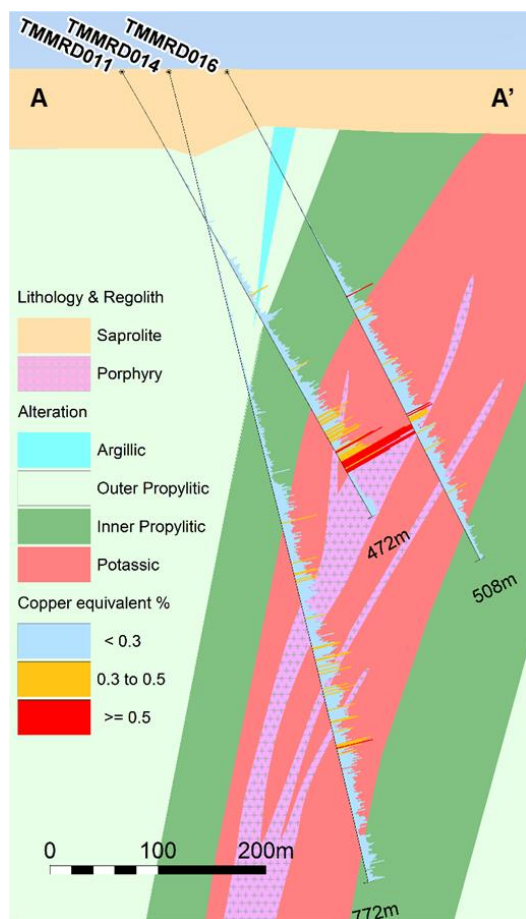


Figure 8: Donnington cross section showing copper anomalism associated with porphyry intrusives.

Prospect	Hole Number	Easting (m)	Northing (m)	total depth (m)	azimuth	dip	Depth From (m)	Interval (m)	Cu (%)	Au (g/t)
Donnington	TMMRD006 <i>including</i>	534602	6218740	460	90	-60	287	125	0.32	0.46
							314	44	0.41	0.62
							364	28	0.39	0.61
	TMMRD010 <i>and</i>	534598	6218842	451	90	-60	325	2	0.24	0.18
							349	77	0.44	0.65
	TMMRD011 <i>including</i>	534633	6218638	472	90	-60	426	24	0.87	1.38
							385	11	0.2	0.21
	TMMRD012	534662	6218104	436	90	-61	395	26	0.19	0.22
	TMMRD014 <i>including</i>	534676	6218582	772	91	-75	468	34	0.24	0.28
							517	17	0.19	0.25
							540	40	0.26	0.36
							587	34	0.25	0.33
							628	36	0.25	0.24
							641	5	0.51	0.38
							748	8	0.15	0.26
							389	25	0.31	0.48
	TMMRD015 <i>including</i>	534495	6218740	595	91	-61	398	16	0.36	0.59
							420	12	0.36	0.62
							491	22	0.24	0.39
	TMMRD016 <i>including</i>	534730	6218657	508	102	-60	499	9	0.3	0.52
							245	21	0.24	0.21
							301	48	0.21	0.2
							354	15	0.3	0.22
Punch	MHACD208	534533	6219084	250	90	-60	64	15	0.11	0.32
	TMMRD013	534398	6219141	385	90	-60	196	10	0.17	0.23
							387	10	0.24	0.27

Reported Mineralisation at >0.3 % CuEq (Cu x 0.55 Au), including at >0.5 % CuEq with up to 3m internal dilution. Intercepts <10 m excluded  
Hole collars at 236mRL in MGA94 zone 55.

Table 1: Drill hole results for Donnington Prospect Sandfire Quarterly June 2017.

## **CONCLUSIONS**

Selection and acquisition of the highly mineralised Temora belt is key in the plan for Sandfire to discovering a major economic deposit in New South Wales. Utilising modern understanding of porphyry systems with new exploration techniques such as low level multi element geochemistry, SWIR, high power IP and reprocessed geophysics has defined a new mineralised system at Donnington in a mature exploration belt. It is hoped this is one of many new discoveries in the region.

## **ACKNOWLEDGMENTS**

The authors would like to acknowledge all previous explorers in the Temora region and the support of the Sandfire management.

## **REFERENCES**

- Chang, Z., Clapin, G., Wilson, A., Mcknight, S., Bottrill, R., Woolley, R., Lisoweic, N., Andrews, W 2014. Illite crystallinity by short wavelength infrared spectral techniques and its application in exploration. SEG conference 2014.
- Halley, S., Dilles, J., Tosdal, R., 2015, Footprints: hydrothermal alteration and geochemical dispersion around Porphyry Copper Deposits, SEG newsletter Jan 2015
- Hoschke, T., 2011 Geophysical Signatures of copper-gold porphyry and epithermal gold deposits, and implications for exploration. ARC Centre of Excellence in Ore Deposits, June 2011
- Kitto, J., 2016. Miscellaneous internal reporting of exploration targeting at Temora.
- Mowat, B., Smith S, 2012. Characteristics of Porphyry Cu-Au Systems in the Ordovician Macquarie Arc of NSW. Australian electronic gold prospecting forum.com.
- Sandfire Resources NL June 2017 Quarterly Report: Competent Person Hooper, B. RPGeo AIG